



Susan Wengraf  
Councilmember District 6

CONSENT CALENDAR  
November 30, 2021

To: Honorable Mayor and Members of the City Council  
From: Councilmember Wengraf (author)  
Subject: Budget Referral to the City Manager to Improve Pedestrian Safety where Sidewalks are Not Provided

RECOMMENDATION

Refer to the Mid-Year Annual Appropriations Ordinance Budget Process \$100,000 to implement steps to promote increased safety for pedestrians of all ages, including seniors and children, on streets lacking sidewalks. This item is requesting the installation of signage to minimize pedestrian-vehicular conflict points at uncontrolled intersections, and to increase driver awareness of pedestrian activity by posting speed limit signs and other signage as a means to improving safe pedestrian access to schools, neighborhood parks, USPS mailboxes, and school and AC Transit bus stops in areas without the benefit of sidewalks.

In addition, this item requests that the City Manager explore the implementation of AB 43 that allows cities to take the safety of vulnerable users into consideration when setting local speed limits. This item requests that the City Manager exercise her authority under the California Vehicle Code to allow for lowering the speed limit to 15 or 20 mph in residential districts where the roadway is less than 25 feet wide.

FINANCIAL IMPLICATIONS

\$100,000

BACKGROUND

Equity and safety are the foundation of the Pedestrian Plan adopted unanimously by the Berkeley City Council in 2020. The vision of the Pedestrian Plan is that, "Berkeley is a model walkable city where traveling on foot or with an assistive device is safe, comfortable, and convenient for people of all races, ethnicities, incomes, ages and abilities."

There are approximately ten linear miles of residential streets in the northeast sector of Berkeley that do not have the advantage of sidewalks to provide safety to residents who choose to walk as a mode of travel for reaching their destination or for recreational enjoyment and physical health.<sup>1</sup> As the volume of vehicles speeding through local

<sup>1</sup> 2020 Pedestrian Plan City of Berkeley, p.9 <https://www.cityofberkeley.info/pedestrian/>

streets in the hills has increased, residents are feeling more vulnerable and unsafe as they try to navigate a walk in their neighborhood; areas that are made up of narrow curvy streets with no buffers or sidewalks to offer protection, blind curves and very few traffic controls at intersections (see map of streets without sidewalks).

In the "Conditions" chapter of the Pedestrian Plan the following description of the North Berkeley Hills is included: "The North Berkeley Hills in the northeast part of town have narrow or non-existent sidewalks on many roads. Given the topography and constrained right-of-way, adding sidewalks likely is not an option on many of these streets."

Everyone should be able to walk safely in their own neighborhood, even if there are no sidewalks. During the recent pandemic we witnessed a new interest in neighborhood streets being utilized by residents for exercise, recreation, and to maintain a good quality of life. Local residential streets in particular are central to the feeling of "community" and "belonging" within a neighborhood and as a City, we should be encouraging walking as an activity. The U.S. Surgeon General recommends at least 30 minutes of physical activity per day, and most people can reach that goal simply by walking.

On the streets without sidewalks, there is no buffer zone between the pedestrian or bicyclist and the vehicle, creating a very risky, unsafe and unfriendly circumstance. Implementing simple, cost-effective steps, like reducing speed limits, and painting and installing signage, can have a beneficial impact on counteracting the car-centric environment that currently dominates our streets. Ideally, crosswalks could be painted to guide pedestrians to the safest place to cross a street. However, ADA compliance conflicts with the creation of a crosswalk in locations where there are no sidewalks, limiting this as a possible mitigation measure.

With approximately 35% of hillside dwellers being over the age of 65, we need to do everything we can to improve access to a less hazardous and more comfortable environment for older residents who choose to walk in their neighborhood. Young school age children should also be able to walk to and from school or school bus stops and parks safely. Several school bus stops in the hills are risky for school buses to reach because of limited visibility. There are no sidewalks for those children to get to or from those bus stops. Cragmont Park, Remillard Park, Glendale La Loma Park and Crescent Park are all hazardous to reach on foot.

The following current conditions have been identified as needing attention:

- \* Signage to alert drivers to the presence of pedestrians.
- \* Traffic control signage at currently uncontrolled intersections.
- \* Signage to increase driver awareness of blind curves and narrow passages.
- \* Lowering speed to 15 mph on narrow streets of less than 25 feet and at blind curves.

ENVIRONMENTAL SUSTAINABILITY

Walkable communities have the potential to reduce air pollution and greenhouse gases because people may choose to walk or bike rather than drive.

CONTACT PERSON

Councilmember Wengraf

Council District 6

510-981-7160

Attachments:

1: [AB 43](#)

2: Map of streets without sidewalks

Assembly Bill No. 43

CHAPTER 690

An act to amend Sections 627, 21400, 22352, 22354, 22358, and 40802 of, and to add Sections 22358.6, 22358.7, 22358.8, and 22358.9 to, the Vehicle Code, relating to traffic safety.

[Approved by Governor October 8, 2021. Filed with Secretary of State October 8, 2021.]

legislative counsel's digest

AB 43, Friedman. Traffic safety.

(1) Existing law establishes various default speed limits for vehicles upon highways, as specified. Existing law authorizes state and local authorities to adjust these default speed limits, as specified, based upon certain findings determined by an engineering and traffic survey. Existing law defines an engineering and traffic survey and prescribes specified factors that must be included in the survey, including prevailing speeds and road conditions. Existing law authorizes local authorities to consider additional factors, including pedestrian and bicyclist safety.

This bill would authorize local authorities to consider the safety of vulnerable pedestrian groups, as specified.

(2) Existing law establishes a prima facie speed limit of 25 miles per hour on any highway, other than a state highway, located in any business or residence district, as defined. Existing law authorizes a local authority to change the speed limit on any such highway, as prescribed, including erecting signs to give notice thereof.

This bill would establish a prima facie speed limit of 25 miles per hour on state highways located in any business or residence district and would authorize the Department of Transportation (Caltrans) to change the speed limit on any such highway, as prescribed, including erecting signs to give notice thereof.

(3) Existing law establishes a speed limit of 65 miles per hour on state highways, as specified. Existing law authorizes Caltrans to declare a speed limit on any such highway, as prescribed, of 60, 55, 50, 45, 40, 35, 30, or 25 miles per hour, including erecting signs to give notice thereof. Existing law also authorizes a local authority, on a section of highway, other than a state highway, where the speed limit is 65 miles per hour to declare a lower speed limit, as specified.

This bill would additionally authorize Caltrans and a local authority to declare a speed limit of 20 or 15 miles per hour, as specified, on these highways.

(4) Existing law authorizes a local authority, without an engineering and traffic survey, to declare a lowered speed limit on portions of highway, as

90

Ch. 690 — 2 —

specified, approaching a school building or school grounds. Existing law limits this authority to sections of highway meeting specified requirements relating to the number of lanes and the speed limit of the highway before the school zone.

This bill would similarly authorize a lowered speed limit on a section of highway contiguous to a business activity district, as defined, and would require that certain violations be subject to a warning citation, for the first 30 days of implementation.

(5) Existing law requires Caltrans, by regulation, to provide for the rounding up or down to the nearest 5 miles per hour increment of the 85th

percentile speed of free-flowing traffic on a portion of highway as determined by a traffic and engineering survey. Existing law requires the Judicial Council to create and implement an online tool by June 30, 2024, for the adjudication of traffic infractions, among other things.

This bill would authorize a local authority to further reduce the speed limit, as specified, and require that certain violations be subject to a warning citation, for the first 30 days of implementation. The bill would, in some circumstances, authorize the reduction of a speed limit beginning June 30, 2024, or when the Judicial Council has developed an online tool for adjudicating traffic infraction violations, whichever is sooner. The bill would require Caltrans to accordingly revise the California Manual on Uniform Traffic Control Devices, as specified.

(6) Existing law defines a speed trap and prohibits evidence of a driver's speed obtained through a speed trap from being admissible in court in any prosecution against a driver for a speed-related offense. Existing law deems a road where the speed limit is not justified by a traffic and engineering survey conducted within the previous 7 years to be a speed trap, unless the roadway has been evaluated by a registered engineer, as specified, in which case the speed limit remains enforceable for a period of 10 years. Existing law exempts a school zone, as defined, from certain provisions relating to defining a speed trap.

This bill would extend the period that a speed limit justified by a traffic and engineering survey conducted more than 7 years ago remains valid, for purposes of speed enforcement, if evaluated by a registered engineer, as specified, to 14 years.

This bill would also exempt a senior zone and business activity district, as defined, from those provisions.

*The people of the State of California do enact as follows:*

SECTION 1. Section 627 of the Vehicle Code is amended to read: 627.

(a) "Engineering and traffic survey," as used in this code, means a survey of highway and traffic conditions in accordance with methods determined by the Department of Transportation for use by state and local authorities.

90

— 3 — Ch. 690

(b) An engineering and traffic survey shall include, among other requirements deemed necessary by the department, consideration of all of the following:

- (1) Prevailing speeds as determined by traffic engineering measurements.
- (2) Accident records.
- (3) Highway, traffic, and roadside conditions not readily apparent to the driver.

(c) When conducting an engineering and traffic survey, local authorities, in addition to the factors set forth in paragraphs (1) to (3), inclusive, of subdivision (b) may consider all of the following:

(1) Residential density, if any of the following conditions exist on the particular portion of highway and the property contiguous thereto, other than a business district:

(A) Upon one side of the highway, within a distance of a quarter of a mile, the contiguous property fronting thereon is occupied by 13 or more separate dwelling houses or business structures.

(B) Upon both sides of the highway, collectively, within a distance of a quarter of a mile, the contiguous property fronting thereon is occupied by 16 or more separate dwelling houses or business structures.

(C) The portion of highway is longer than one-quarter of a mile but has the ratio of separate dwelling houses or business structures to the length of the highway described in either subparagraph (A) or (B).

(2) Safety of bicyclists and pedestrians, with increased consideration for vulnerable pedestrian groups including children, seniors, persons with disabilities, users of personal assistive mobility devices, and the unhouseed.

SEC. 2. Section 21400 of the Vehicle Code is amended to read: 21400.

(a) The Department of Transportation shall, after consultation with local agencies and public hearings, adopt rules and regulations prescribing uniform standards and specifications for all official traffic control devices placed pursuant to this code, including, but not limited to, stop signs, yield right-of-way signs, speed restriction signs, railroad warning approach signs, street name signs, lines and markings on the roadway, and stock crossing signs placed pursuant to Section 21364.

(b) The Department of Transportation shall, after notice and public hearing, determine and publicize the specifications for uniform types of warning signs, lights, and devices to be placed upon a highway by a person engaged in performing work that interferes with or endangers the safe movement of traffic upon that highway.

(c) Only those signs, lights, and devices as are provided for in this section shall be placed upon a highway to warn traffic of work that is being performed on the highway.

(d) Control devices or markings installed upon traffic barriers on or after January 1, 1984, shall conform to the uniform standards and specifications required by this section.

SEC. 3. Section 22352 of the Vehicle Code is amended to read:

90

#### Ch. 690 — 4 —

22352. The prima facie limits are as follows and shall be applicable unless changed as authorized in this code and, if so changed, only when signs have been erected giving notice thereof:

(a) Fifteen miles per hour:

(1) When traversing a railway grade crossing, if during the last 100 feet of the approach to the crossing the driver does not have a clear and unobstructed view of the crossing and of any traffic on the railway for a distance of 400 feet in both directions along the railway. This subdivision does not apply in the case of any railway grade crossing where a human flagperson is on duty or a clearly visible electrical or mechanical railway crossing signal device is installed but does not then indicate the immediate approach of a railway train or car.

(2) When traversing any intersection of highways if during the last 100 feet of the driver's approach to the intersection the driver does not have a clear and unobstructed view of the intersection and of any traffic upon all of the highways entering the intersection for a distance of 100 feet along all those highways, except at an intersection protected by stop signs or yield right-of-way signs or controlled by official traffic control signals.

(3) On any alley.

(b) Twenty-five miles per hour:

(1) On any highway, in any business or residence district unless a different speed is determined by local authority or the Department of Transportation under procedures set forth in this code.

(2) When approaching or passing a school building or the grounds thereof, contiguous to a highway and posted with a standard "SCHOOL" warning sign, while children are going to or leaving the school either during school hours or during the noon recess period. The prima facie limit shall also apply when approaching or passing any school grounds which are not

separated from the highway by a fence, gate, or other physical barrier while the grounds are in use by children and the highway is posted with a standard "SCHOOL" warning sign. For purposes of this subparagraph, standard "SCHOOL" warning signs may be placed at any distance up to 500 feet away from school grounds.

(3) When passing a senior center or other facility primarily used by senior citizens, contiguous to a street other than a state highway and posted with a standard "SENIOR" warning sign. A local authority may erect a sign pursuant to this paragraph when the local agency makes a determination that the proposed signing should be implemented. A local authority may request grant funding from the Active Transportation Program pursuant to Chapter 8 (commencing with Section 2380) of Division 3 of the Streets and Highways Code, or any other grant funding available to it, and use that grant funding to pay for the erection of those signs, or may utilize any other funds available to it to pay for the erection of those signs, including, but not limited to, donations from private sources.

SEC. 4. Section 22354 of the Vehicle Code is amended to read: 22354.

(a) Whenever the Department of Transportation determines upon the basis of an engineering and traffic survey that the limit of 65 miles

90

— 5 — Ch. 690

per hour is more than is reasonable or safe upon any portion of a state highway where the limit of 65 miles is applicable, the department may determine and declare a prima facie speed limit of 60, 55, 50, 45, 40, 35, 30, 25, 20, or 15 miles per hour, whichever is found most appropriate to facilitate the orderly movement of traffic and is reasonable and safe, which declared prima facie speed limit shall be effective when appropriate signs giving notice thereof are erected upon the highway.

(b) This section shall become operative on the date specified in subdivision (c) of Section 22366.

SEC. 5. Section 22358 of the Vehicle Code is amended to read: 22358.

(a) Whenever a local authority determines upon the basis of an engineering and traffic survey that the limit of 65 miles per hour is more than is reasonable or safe upon any portion of any street other than a state highway where the limit of 65 miles per hour is applicable, the local authority may by ordinance determine and declare a prima facie speed limit of 60, 55, 50, 45, 40, 35, 30, 25, 20, or 15 miles per hour, whichever is found most appropriate to facilitate the orderly movement of traffic and is reasonable and safe, which declared prima facie limit shall be effective when appropriate signs giving notice thereof are erected upon the street.

(b) This section shall become operative on the date specified in subdivision (c) of Section 22366.

SEC. 6. Section 22358.6 is added to the Vehicle Code, to read:

22358.6. The Department of Transportation shall, in the next scheduled revision, revise and thereafter maintain the California Manual on Uniform Traffic Control Devices to require the Department of Transportation or a local authority to round speed limits to the nearest five miles per hour of the 85th percentile of the free-flowing traffic. However, in cases in which the speed limit needs to be rounded up to the nearest five miles per hour increment of the 85th-percentile speed, the Department of Transportation or a local authority may decide to instead round down the speed limit to the lower five miles per hour increment. A local authority may additionally lower the speed limit as provided in Sections 22358.7 and 22358.8.

SEC. 7. Section 22358.7 is added to the Vehicle Code, to read: 22358.7.

(a) If a local authority, after completing an engineering and traffic survey, finds that the speed limit is still more than is reasonable or safe, the local authority may, by ordinance, determine and declare a prima

facie speed limit that has been reduced an additional five miles per hour for either of the following reasons:

(1) The portion of highway has been designated as a safety corridor. A local authority shall not deem more than one-fifth of their streets as safety corridors.

(2) The portion of highway is adjacent to any land or facility that generates high concentrations of bicyclists or pedestrians, especially those from vulnerable groups such as children, seniors, persons with disabilities, and the unhoused.

(b) (1) As used in this section, “safety corridor” shall be defined by the Department of Transportation in the next revision of the California Manual

90

**Ch. 690 — 6 —**

on Uniform Traffic Control Devices. In making this determination, the department shall consider highways that have the highest number of serious injuries and fatalities based on collision data that may be derived from, but not limited to, the Statewide Integrated Traffic Records System.

(2) The Department of Transportation shall, in the next revision of the California Manual on Uniform Traffic Control Devices, determine what constitutes land or facilities that generate high concentrations of bicyclists and pedestrians, as used in paragraph (2) of subdivision (a). In making this determination, the department shall consider density, road use type, and bicycle and pedestrian infrastructure present on a section of highway.

(c) A local authority may not lower a speed limit as authorized by this section until June 30, 2024, or until the Judicial Council has developed an online tool for adjudicating infraction violations statewide as specified in Article 7 (commencing with Section 68645) of Chapter 2 of Title 8 of the Government Code, whichever is sooner.

(d) A local authority shall issue only warning citations for violations of exceeding the speed limit by 10 miles per hour or less for the first 30 days that a lower speed limit is in effect as authorized by this section.

SEC. 8. Section 22358.8 is added to the Vehicle Code, to read: 22358.8.

(a) If a local authority, after completing an engineering and traffic survey, finds that the speed limit is still more than is reasonable or safe, the local authority may, by ordinance, retain the current speed limit or restore the immediately prior speed limit if that speed limit was established with an engineering and traffic survey and if a registered engineer has evaluated the section of highway and determined that no additional general purpose lanes have been added to the roadway since completion of the traffic survey that established the prior speed limit.

(b) This section does not authorize a speed limit to be reduced by any more than five miles per hour from the current speed limit nor below the immediately prior speed limit.

(c) A local authority shall issue only warning citations for violations of exceeding the speed limit by 10 miles per hour or less for the first 30 days that a lower speed limit is in effect as authorized by this section.

SEC. 9. Section 22358.9 is added to the Vehicle Code, to read:

22358.9. (a) (1) Notwithstanding any other law, a local authority may, by ordinance, determine and declare a 25 or 20 miles per hour prima facie speed limit on a highway contiguous to a business activity district when posted with a sign that indicates a speed limit of 25 or 20 miles per hour.

(2) The prima facie limits established under paragraph (1) apply only to highways that meet all of the following conditions:

(A) A maximum of four traffic lanes.

(B) A maximum posted 30 miles per hour prima facie speed limit immediately prior to and after the business activity district, if establishing a 25 miles per hour speed limit.



(C) A maximum posted 25 miles per hour prima facie speed limit immediately prior to and after the business activity district, if establishing a 20 miles per hour speed limit.

90

## — 7 — Ch. 690

(b) As used in this section, a “business activity district” is that portion of a highway and the property contiguous thereto that includes central or neighborhood downtowns, urban villages, or zoning designations that prioritize commercial land uses at the downtown or neighborhood scale and meets at least three of the following requirements in paragraphs (1) to (4), inclusive:

(1) No less than 50 percent of the contiguous property fronting the highway consists of retail or dining commercial uses, including outdoor dining, that open directly onto sidewalks adjacent to the highway.

(2) Parking, including parallel, diagonal, or perpendicular spaces located alongside the highway.

(3) Traffic control signals or stop signs regulating traffic flow on the highway, located at intervals of no more than 600 feet.

(4) Marked crosswalks not controlled by a traffic control device.

(c) A local authority shall not declare a prima facie speed limit under this section on a portion of a highway where the local authority has already lowered the speed limit as permitted under Sections 22358.7 and 22358.8.

(d) A local authority shall issue only warning citations for violations of exceeding the speed limit by 10 miles per hour or less for the first 30 days that a lower speed limit is in effect as authorized by this section.

SEC. 10. Section 40802 of the Vehicle Code is amended to read:

40802. (a) A “speed trap” is either of the following:

(1) A particular section of a highway measured as to distance and with boundaries marked, designated, or otherwise determined in order that the speed of a vehicle may be calculated by securing the time it takes the vehicle to travel the known distance.

(2) A particular section of a highway with a prima facie speed limit that is provided by this code or by local ordinance under paragraph (1) of subdivision (b) of Section 22352, or established under Section 22354, 22357, 22358, or 22358.3, if that prima facie speed limit is not justified by an engineering and traffic survey conducted within five years prior to the date of the alleged violation, and enforcement of the speed limit involves the use of radar or any other electronic device that measures the speed of moving objects. This paragraph does not apply to a local street, road, school zone, senior zone, or business activity district.

(b) (1) For purposes of this section, a local street or road is one that is functionally classified as “local” on the “California Road System Maps,” that are approved by the Federal Highway Administration and maintained by the Department of Transportation. It may also be defined as a “local street or road” if it primarily provides access to abutting residential property and meets the following three conditions:

(A) Roadway width of not more than 40 feet.

(B) Not more than one-half of a mile of uninterrupted length. Interruptions shall include official traffic control signals as defined in Section 445.

(C) Not more than one traffic lane in each direction.

(2) For purposes of this section, “school zone” means that area approaching or passing a school building or the grounds thereof that is

90

contiguous to a highway and on which is posted a standard "SCHOOL" warning sign, while children are going to or leaving the school either during school hours or during the noon recess period. "School zone" also includes the area approaching or passing any school grounds that are not separated from the highway by a fence, gate, or other physical barrier while the grounds are in use by children if that highway is posted with a standard "SCHOOL" warning sign.

(3) For purposes of this section, "senior zone" means that area approaching or passing a senior center building or other facility primarily used by senior citizens, or the grounds thereof that is contiguous to a highway and on which is posted a standard "SENIOR" warning sign, pursuant to Section 22352.

(4) For purposes of this section, "business activity district" means a section of highway described in subdivision (b) of Section 22358.9 in which a standard 25 miles per hour or 20 miles per hour speed limit sign has been posted pursuant to paragraph (1) of subdivision (a) of that section.

(c) (1) When all of the following criteria are met, paragraph (2) of this subdivision shall be applicable and subdivision (a) shall not be applicable:

(A) When radar is used, the arresting officer has successfully completed a radar operator course of not less than 24 hours on the use of police traffic radar, and the course was approved and certified by the Commission on Peace Officer Standards and Training.

(B) When laser or any other electronic device is used to measure the speed of moving objects, the arresting officer has successfully completed the training required in subparagraph (A) and an additional training course of not less than two hours approved and certified by the Commission on Peace Officer Standards and Training.

(C) (i) The prosecution proved that the arresting officer complied with subparagraphs (A) and (B) and that an engineering and traffic survey has been conducted in accordance with subparagraph (B) of paragraph (2). The prosecution proved that, prior to the officer issuing the notice to appear, the arresting officer established that the radar, laser, or other electronic device conformed to the requirements of subparagraph (D).

(ii) The prosecution proved the speed of the accused was unsafe for the conditions present at the time of alleged violation unless the citation was for a violation of Section 22349, 22356, or 22406.

(D) The radar, laser, or other electronic device used to measure the speed of the accused meets or exceeds the minimal operational standards of the National Highway Traffic Safety Administration, and has been calibrated within the three years prior to the date of the alleged violation by an independent certified laser or radar repair and testing or calibration facility.

(2) A "speed trap" is either of the following:

(A) A particular section of a highway measured as to distance and with boundaries marked, designated, or otherwise determined in order that the speed of a vehicle may be calculated by securing the time it takes the vehicle to travel the known distance.

90

(B) (i) A particular section of a highway or state highway with a prima facie speed limit that is provided by this code or by local ordinance under paragraph (1) of subdivision (b) of Section 22352, or established under Section 22354, 22357, 22358, or 22358.3, if that prima facie speed limit is not justified by an engineering and traffic survey conducted within one of the following time periods, prior to the date of the alleged violation, and enforcement of the speed limit involves the use of radar or any other electronic device that measures the speed of moving objects:

(l) Except as specified in subclause (II), seven years.

(II) If an engineering and traffic survey was conducted more than seven years prior to the date of the alleged violation, and a registered engineer evaluates the section of the highway and determines that no significant changes in roadway or traffic conditions have occurred, including, but not limited to, changes in adjoining property or land use, roadway width, or traffic volume, 14 years.

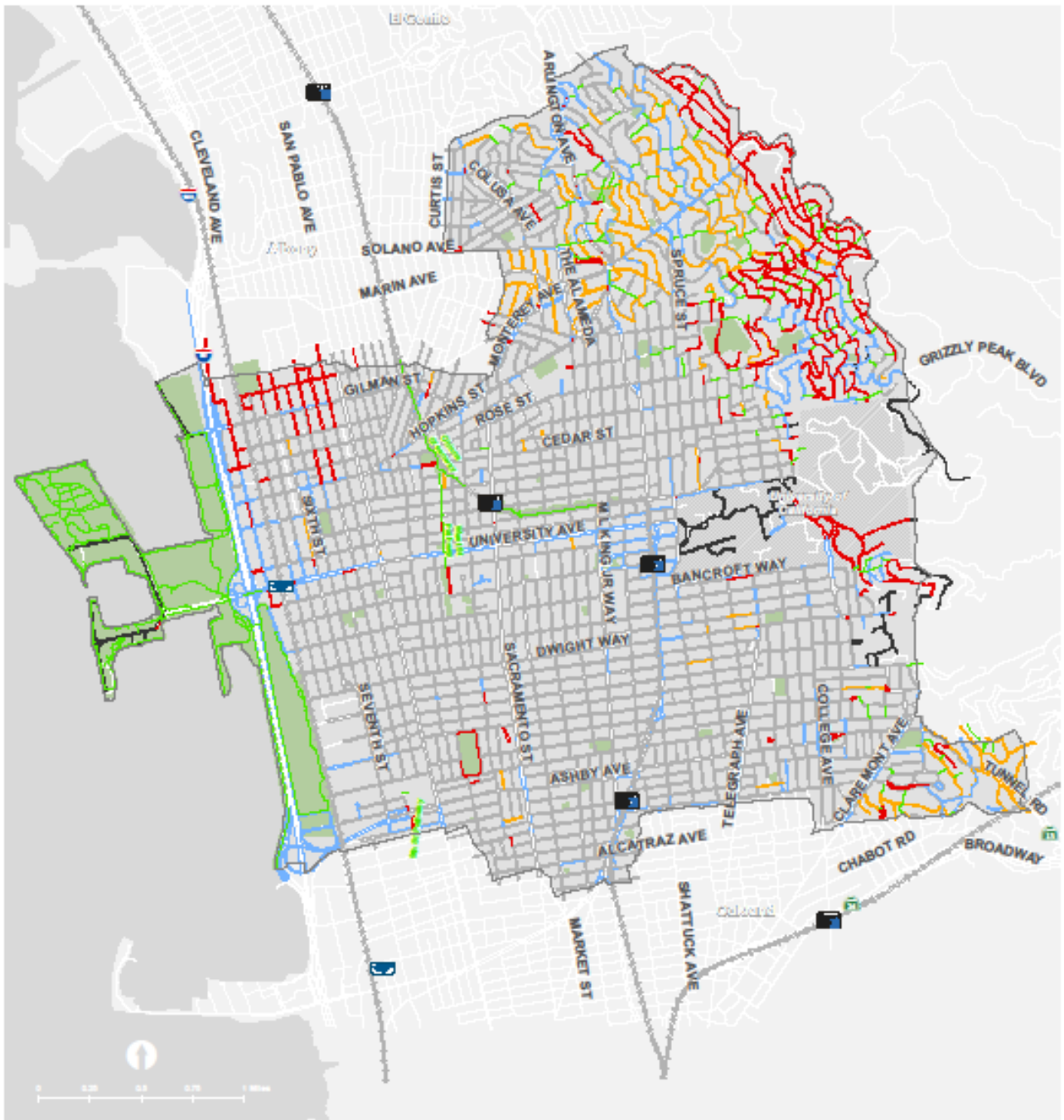
(ii) This subparagraph does not apply to a local street, road, or school zone, senior zone, or business activity district.

O

90

— 9 — Ch. 690

FIGURE 4: EXISTING SIDEWALK COVERAGE IN BERKELEY



- Amtrak Station
- BART Station
- Railroad
- Sidewalks 5 feet or wider
- Sidewalks < 5 feet wide
- Multi-Use Trails/Stairways
- Sidewalk Presence Width Unknown
- No Sidewalk
- No Data Available
- Parks/Recreation
- Berkeley City Boundary

